

SXAD

KBNA ACTIVATION GUIDE FOR...

PREPAR3D®

1) Run the installer and select the correct Prepar3d v2/3/4 path...

This reads the registry path to install the scenery into the correct location.

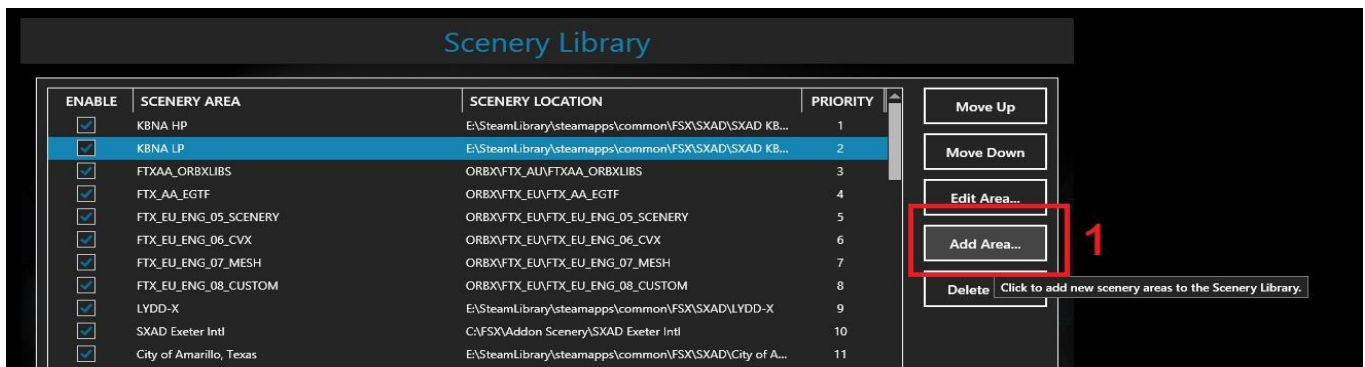
2) Start up Prepar3d and load your aircraft at the airport...

Press "TAB" to bring up the menu bar...

Go to "World" > "Scenery Library"

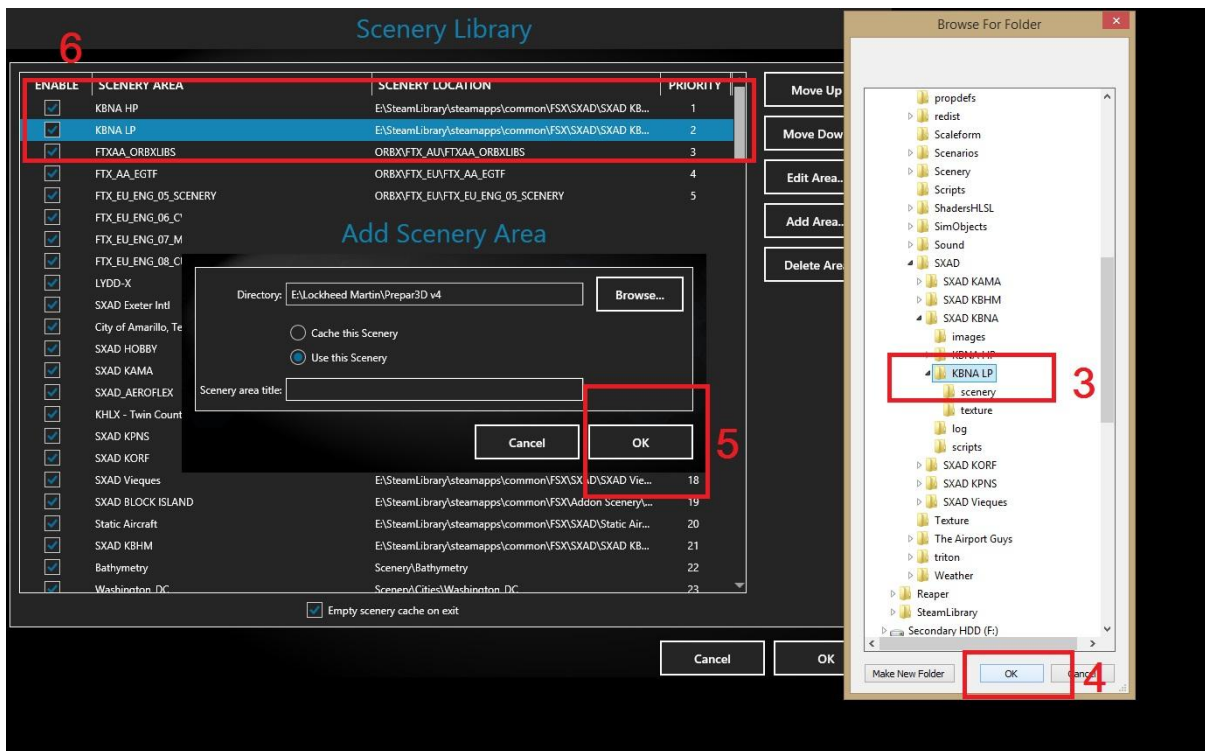


3) Press "Add Area"



4) Select the "SXAD/KBNA LP" folder and hit "OK"...

It will load into the list, then repeat for "KBNA HP", in that order, you can move the order of priority with "Move Up" or "Move Down".



5) Then hit "OK", and then both scenery will load...

But we recommend you then **RESTART Prepar3d** for stability's sake!

Thank you!

Any questions, please contact sxad@outlook.com